



MARY JANE MUCKLESTONE



IVY BIGELOW



SUSAN STERNLIEB



LEIGH RADFORD

ALL TIED UP

For the Winter 2004 staff project, the *Interweave Knits* staff knitted neckties. Here are our variations.



PAM ALLEN, EDITOR

Finished Size 48" (122 cm) long and 2¼" (5.5 cm) wide at end worn outside.

Yarn Lorna's Laces Shepherd Sock (75% superwash wool, 25% nylon; 215 yd [196 m]/2 oz): #708 camouflage, 1 skein.

Needles Size 2 (2.75 mm).

Notions Tapestry needle.

Gauge 34 sts and 44 rows = 4" (10 cm) in St st.

CO 40 sts. Work 6 rows garter st, ending with a WS row. Cont in St st until piece measures 11½" (29 cm) from beg, ending with a WS row. *Dec row:* K2, ssk, knit to last 4 sts, k2tog, k2—38 sts rem. Cont in St st, rep dec row every 10th row 5 times, then every 12th row 3 times, then every 14th row once, then every 16th row once—18 sts rem; piece should measure about 22" (56 cm) from beg. Cont even in St st until piece measures 14" (35.5 cm) from last dec row, ending with a WS row. *Inc row:* K2, M1 (left slant, see page 4), knit to last 2 sts, M1, k2—20 sts. Cont in St st, rep inc row every 16th row 3 times, then every 14th row 2 times—30 sts; piece should measure about 43" (109 cm) from beg. Cont even until piece measures 47" (119.5 cm) from beg, ending with a WS row. Work 5 rows garter st, ending with a RS row. With WS facing, BO all sts kwise. Weave in loose ends. Block.



IVY BIGELOW, CONTRIBUTING EDITOR

Finished Size 52" (132 cm) long and 1½" (3.8 cm) wide at end worn outside.

Yarn Skacel Riviera (45% cotton, 30% linen, 25% rayon; 110 yd [100 m]/50 g): #705 gray-green, 1 ball.

Needles Size 2 (2.75 mm).

Gauge 48 sts and 36 rows = 4" (10 cm) in k1, p1 rib.



ANN BUDD



PAM ALLEN

Using the backward loop method (see page 4), CO 3 sts. Cont as foll:

Row 1: (WS) K1, p1, k1.

Row 2: K1, M1 pwise (see page 4), k1, M1 pwise, k1—5 sts.

Row 3: [P1, k1] 2 times, p1.

Row 4: P1, M1 kwise (either left or right slant, see page 4), p1, k1, p1, M1 kwise, p1—7 sts.

Row 5: [K1, p1] 3 times, k1.

Row 6: K1, M1 pwise, work k1, p1 rib to last 2 sts, k1, M1 pwise, k1—9 sts.

Row 7: *P1, k1; rep from * to last st, p1.

Row 8: P1, M1 kwise, work p1, k1 rib to last 2 sts, p1, M1 kwise, p1—11 sts.

Row 9: *K1, p1; rep from * to last st, k1.

Rows 10–17: Rep Rows 6–9 twice more—19 sts.

Row 18: *P1, k1; rep from * to last st, p1.

Row 19: P1, M1 kwise, work p1, k1 rib to last 2 sts, p2tog—19 sts.

Row 20: *K1, p1; rep from * to last st, k1.

Row 21: K1, M1 pwise, work k1, p1 rib to last 2 sts, k2tog.

Rep Rows 18–21 until longest edge measures about 14" (35.5 cm) from beg, ending with Row 18. **Shape tip:** Dec for tip as foll:
Dec Row 1: (WS) *K1, p1; rep from * to last 3 sts, k1, p2tog—18 sts rem.
Dec Row 2: *K1, p1; rep from *.
Dec Row 3: *K1, p1; rep from * to last 2 sts, k2tog—17 sts rem.
Dec Row 4: *P1, k1; rep from * to last st, p1.
Dec Rows 5–10: Rep Dec Rows 1–4 once more, then work Dec Rows 1 and 2 once—14 sts rem.
Dec Row 11: (WS) P1, M1 kwise, work p1, k1 rib to last 3 sts, p1, k2tog.
Dec Row 12: K2tog, work p1, k1 rib to end—13 sts.
Dec Row 13: K1, M1 pwise, work k1, p1 rib to last 2 sts, end k2tog.
Dec Row 14: K2tog, work p1, k1 rib to last st, end p1—12 sts.
Dec Rows 15–20: Rep Dec Rows 11–14 once more, then work Dec Rows 11 and 12 once—9 sts.
Dec Row 21: K1, M1 pwise, work k1, p1 rib to last 2 sts, end k2tog.
 Rep Rows 18–21 as given on page 1 (not the dec rows) on 9 sts until longest edge measures about 52" (132 cm) from beg. BO all sts in patt. Block.



ANN BUDD, MANAGING EDITOR

Finished Size About 54½" (138.5 cm) long and 2¾" (7 cm) at widest point.

Yarn K1C2 Richesse et Soie (65% cashmere, 35% silk; 146 yd [133 m]/25 g): #9521 moss, 1 ball.

Needles Size 1 (2.25 mm).

Notions Tapestry needle.

Gauge 36 sts and 50 rows = 4" (10 cm) in St st.

CO 7 sts. *Set-up row:* (WS) K2, p3, k2. Beg with Row 1, work through Row 47 of Lower Tie chart once—27 sts. Rep Rows 46–47 until piece measures 6½" (16.5 cm) from last inc st, ending with a WS row (Row 46)—piece should measure about 10½" (26.5 cm) from CO. Change to Upper Tie chart and work Rows 1–69 once—15 sts rem. Rep Rows 68–69 until piece measures about 53" (134.5 cm) from beg, ending with a WS row (Row 68).

Shape narrow end:

Row 1: (RS) K1, p1, k3, ssp (see page 4), k1, p2tog, k3, p1, k1—13 sts rem.

Rows 2 and 4: K1, k1 through back loop (tbl), p3, k1tbl, p1, k1tbl, p3, k1tbl, k1.

Row 3: K1, p1, k3, p1, k1, p1, k3, p1, k1.

Row 5: K1, p1, k3, p3tog, k3, p1, k1—11 sts rem.

Rows 6 and 8: K1, k1tbl, p3, k1tbl, p3, k1tbl, k1.

Row 7: K1, p1, k3, p1, k3, p1, k1.

Row 9: K1, p1, k2, sl 2 tog kwise, k1, p2sso, k2, p1, k1—9 sts rem.

Row 10: K1, k1tbl, p5, k1tbl, k1.

BO all sts in patt. Weave in loose ends. Block.



MARY JANE MUCKLESTONE, PHOTOSTYLIST

Finished Size 54" (137 cm) long and 3" (7.5 cm) wide at end worn outside.

Yarn Morehouse Merino 2 Strand (100% merino; 220 yd [201 m]/2 oz): rust and ochre, 1 skein each.

Needles Size 1 (2.25 cm): 24" (60-cm) circular.

Notions Tapestry needle; removable stitch markers or scrap yarn.

Gauge 40 sts and 48 rows = 4" (10 cm) in slip-stitch pattern.

Slip-Stitch Pattern: (multiple of 4 sts + 3)

Note: Always hold the yarn to the wrong side of the work when slipping sts.

Row 1: (RS) With first color, *k3, sl 1; rep from * to last 3 sts, k3.

Row 2: With first color, rep Row 1.

Rows 3 and 4: With second color, k1, *sl 1, k3; rep from * to last 2 sts, sl 1, k1.

Rep Rows 1–4 for pattern.

With ochre, CO 27 sts. Knit 4 rows. Join rust. Knit 2 rows. Knit 2 rows with ochre, carrying unused color up the selvedge until it is needed again. Beg with rust, rep Rows 1–4 of slip-stitch patt, working 2 rows of each color alternately, until piece measures 4½" (11.5 cm) from beg, ending with a WS row. *Dec row:* (RS) K1, ssk, work in patt to last 3 sts, k2tog, k1—2 sts dec'd. (*Note:* When cont in patt after working decs, do not slip any edge sts; knit the edge sts instead, maintaining the patt as much as possible over the rest of the sts.) Work even in patt, and *at the same time*, when piece measures 5½" (14 cm), 14" (35.5 cm), 18" (45.5 cm), 20" (51 cm), and 32" (81.5 cm) from beg, work the dec row again—15 sts rem after all decs have been worked. Cut off ochre and work even in garter st with rust for 1" (2.5 cm). Mark both sides of the last row completed for beg and end points of edging. Cont in garter st until piece measures 54" (137 cm) from beg. BO all sts. **Edging:** With ochre, RS facing, and beg at first marked position about 1" (2.5 cm) before the slip-st patt starts, pick up and knit 1 st for every garter ridge along the selvedge of the slip-st section of the tie, then 1 st for every st across the CO edge, then 1 st for every garter ridge along the rem selvedge of the slip-st section, ending at the second marker about 1" (2.5 cm) beyond the end of the patt section. On the next row, BO all sts kwise. Weave in loose ends. Block lightly.



LEIGH RADFORD, ART DIRECTOR

Finished Size About 1" (2.5 cm) wide and 56" (142 cm) long.

Yarn Berroco Suede (100% nylon; 120 yd [110 m]/50 g): #3717 Wild Bill Hickock, 1 ball.

Needles Size 7 (4.5 mm): set of 2 double-pointed (dpn).

Notions Stitch holders; tapestry needle; bath towel; sharp-point sewing needle and matching sewing thread.

Gauge 18 sts and 29 rows = 4" (10 cm) in St st.

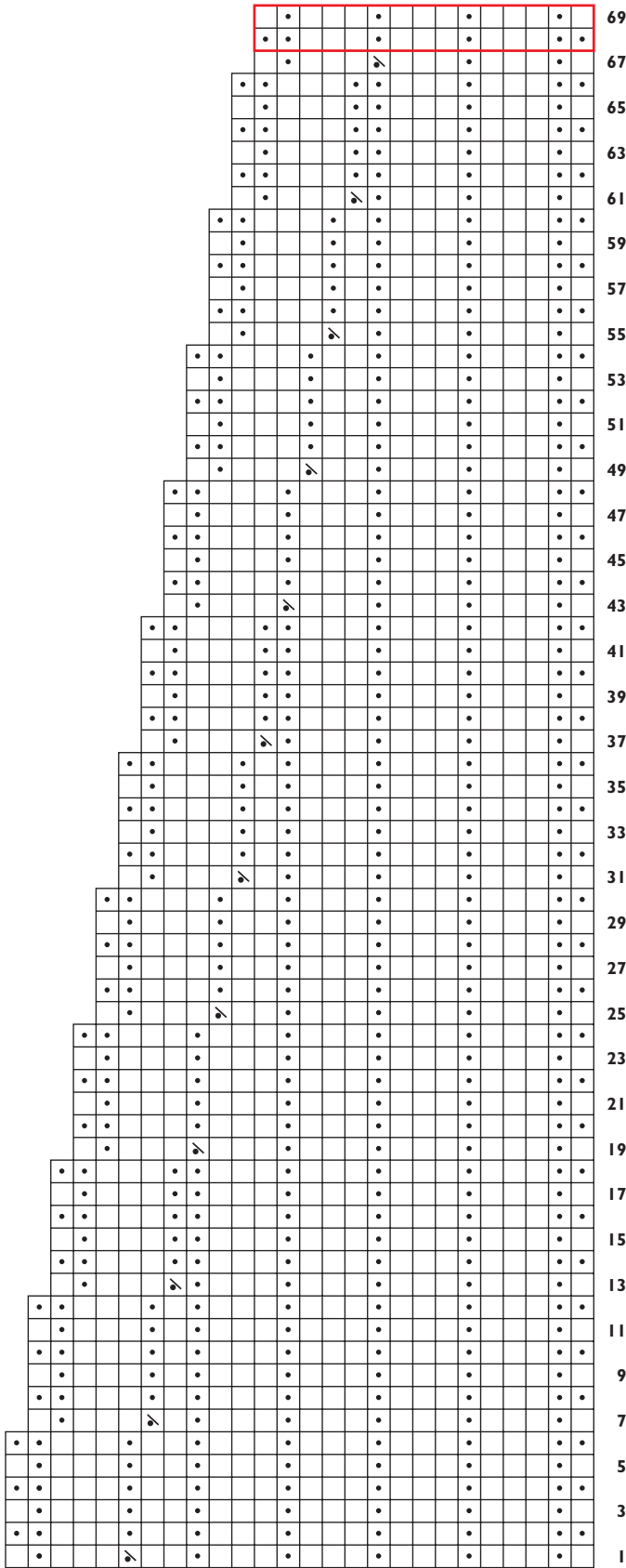
I-cords: with dpn, CO 5 sts. Work 5-st I-cord (knit across 5 sts, then without turning needle, slip sts to other end of needle, pull yarn around the back of the work, and knit the sts again) until piece measures 17" (43 cm) from beg. Cut yarn and place sts on holder. Make 2 more I-cords the same way. With RS facing, place all sts onto 1 dpn—15 sts total. Join yarn with WS facing, and cont as foll:

Row 1: (WS) Sl 1, p4, k5, p5.

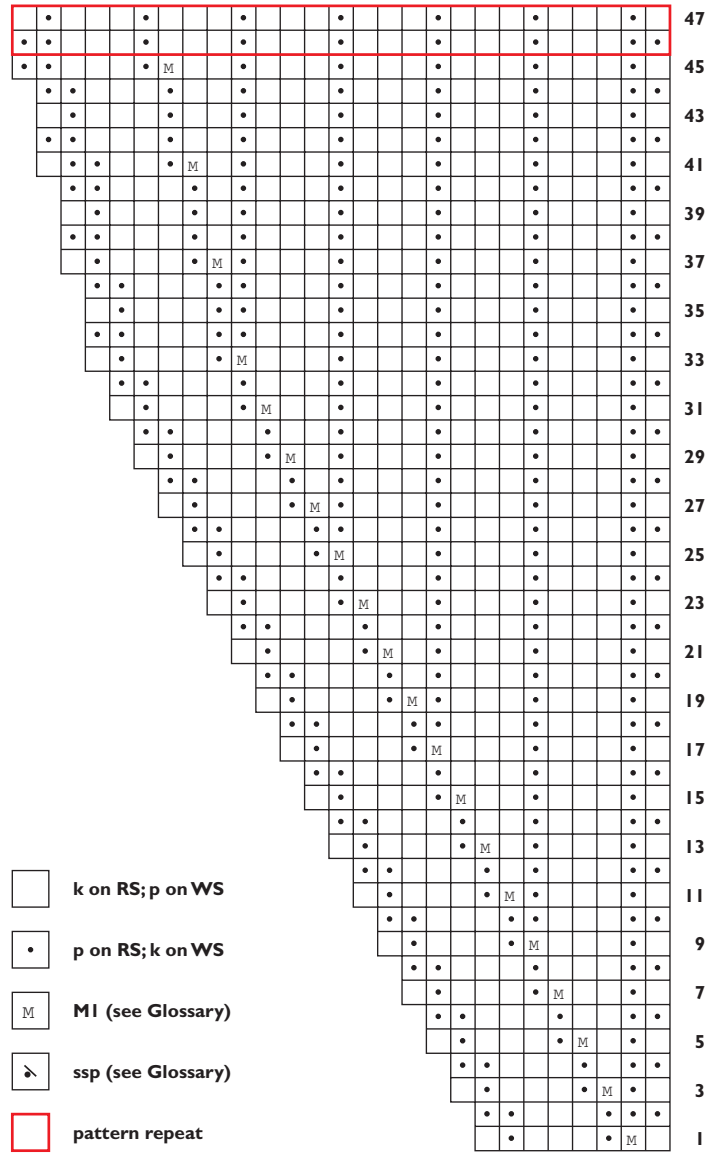
Row 2: (RS) Sl 1, k4, p5, k5.

Rep these 2 rows until piece measures 1½" (3.8 cm) from joining row, ending with a WS row. *Next row:* (RS) Sl 1, k4, p2tog,

Upper Tie



Lower Tie



- k on RS; p on WS
- p on RS; k on WS
- M MI (see Glossary)
- / ssp (see Glossary)
- pattern repeat

p1, p2tog, k5—13 sts rem. Cont as foll:

Row 1: (WS) Sl 1, p4, k3, p5.

Row 2: Sl 1, k4, p3, k5.

Rep these 2 rows until piece measures 6½" (16.5 cm) from joining row, ending with a WS row. Next row: (RS) Sl 1, k2, ssk, p3, k2tog, k3—11 sts rem. Cont in rib as established until piece measures 16½" (42 cm) from joining row, ending with a WS row. Next row: (RS) Sl 1, k1, ssk, p3, k2tog, k2—9 sts rem. Cont in rib as established until piece measures 56" (142 cm) from CO edge. BO all sts. Weave in loose ends. Pin tie to folded bath towel at I-cord join. Beg with I-cord on far right, braid the 3 I-cords firmly. Secure the ends in place with sewing thread. Block lightly.



**SUSAN STERNLIEB,
EDITORIAL ASSISTANT**

Finished Size 55" (139.5 cm) long and 2½" (6.5 cm) wide at end worn outside.

Yarn Fonty Velourine (54% cotton, 46% viscose; 120 yd [110 m]/50 g): #613 green, 1 ball. Yarn distributed by Russi Sales.

Needles Size 5 (3.75 mm).

Notions Tapestry needle.

Gauge 14 sts and 22 rows = 2½" (6.5 cm) in rib pattern.

CO 14 sts. Work rib as foll:

Row 1: (RS) [K2, p1] 4 times, k2.

Row 2: K3 [p2, k1] 2 times, p2, k3.

Rep Rows 1 and 2 until piece measures 14½" (37 cm) from beg, ending with a RS row.

Dec Row 1: (WS) K2, k2tog, p1, k1, p2, k1, p1, k2tog, k2—12 sts rem.

Row 3: (RS) K2, p1, k1, p1, k2, p1, k1, p1, k2.

Row 4: K3, p1, k1, p2, k1, p1, k3.

Rep Rows 3 and 4 until piece measures 7" (18 cm) from dec row, ending with a RS row.

Dec Row 2: (WS) K2, p2tog, k1, p2, k1, p2tog, k2—10 sts rem.

Row 5: (RS) K3, p1, k2, p1, k3.

Row 6: K2, p1, k1, p2, k1, p1, k2.

Rep Rows 5 and 6 until piece measures 7" (18 cm) from last dec row, ending with a RS row.

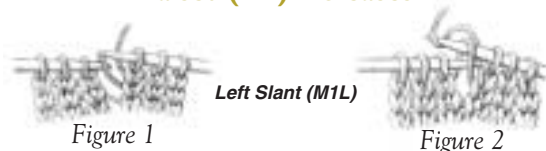
Dec Row 3: (WS) K2, p1, k1, p2tog, k1, p1, k2—9 sts rem.

Row 7: (RS) K3, p1, k1, p1, k3.

Row 8: K2, [p1, k1] 2 times, p1, k2.

Rep Rows 7 and 8 until piece measures 26½" (67.5 cm) from last dec row, or about 55" (139.5 cm) from CO edge. BO all sts. Weave in loose ends. Block lightly. ∞

Raised (M1) Increases

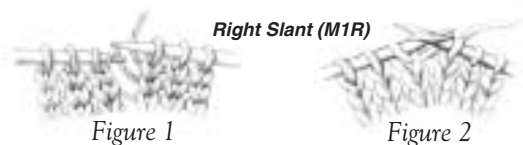


Left Slant (M1L)

Figure 1

Figure 2

With left needle tip, lift strand between needles from front to back (Figure 1). Knit lifted loop through the back (Figure 2).



Right Slant (M1R)

Figure 1

Figure 2

With left needle tip, lift strand between needles from back to front (Figure 1). Knit lifted loop through the front (Figure 2).

Purlwise (M1 pwise)



Figure 1



Figure 2

With left needle tip, lift strand between needles, from back to front (Figure 1). Purl lifted loop (Figure 2).

Backward Loop

Cast-On



*Loop working yarn and place it on needle backward so that it doesn't unwind. Repeat from *.

Ssp Decrease



Figure 1

Figure 2

Holding yarn in front, slip two stitches knitwise one at a time onto right needle (Figure 1). Slip them back onto left needle and purl the two stitches together through back loops (Figure 2).