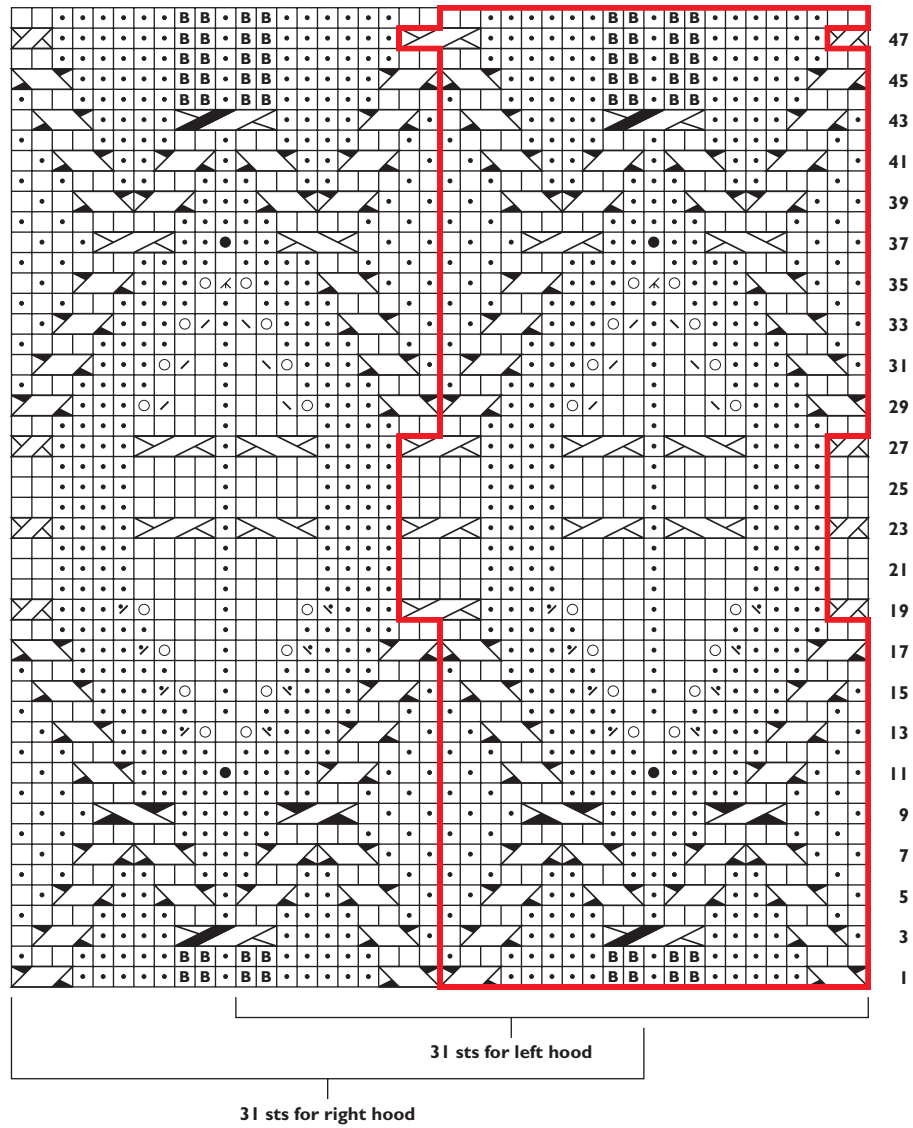


Traveling Cables and Bobbles



- | | | | |
|--|---------------------------|--|---|
| | k on RS; p on WS | | RT (see Stitch Guide) |
| | p on RS; k on WS | | 2/1 LPC: SI 2 sts onto cn and hold in front, p1, k2 from cn. |
| | k tbl on RS; p tbl on WS | | 2/1 RPC: SI 1 st onto cn and hold in back, k2, p1 from cn. |
| | yo | | 2/2 LC: SI 2 sts onto cn and hold in front, k2, k2 from cn. |
| | k2tog | | 2/2 RC: SI 2 sts onto cn and hold in back, k2, k2 from cn. |
| | ssk | | 2/2 LPC: SI 2 sts onto cn and hold in front, p2, k2 from cn. |
| | k3tog | | 2/2 RPC: SI 2 sts onto cn and hold in back, k2, p2 from cn. |
| | p2tog | | 3/2 RPC: SI 2 sts onto cn and hold in back, k2, p1, k2 from cn. |
| | ssp | | pattern repeat |
| | Bobble (see Stitch Guide) | | |