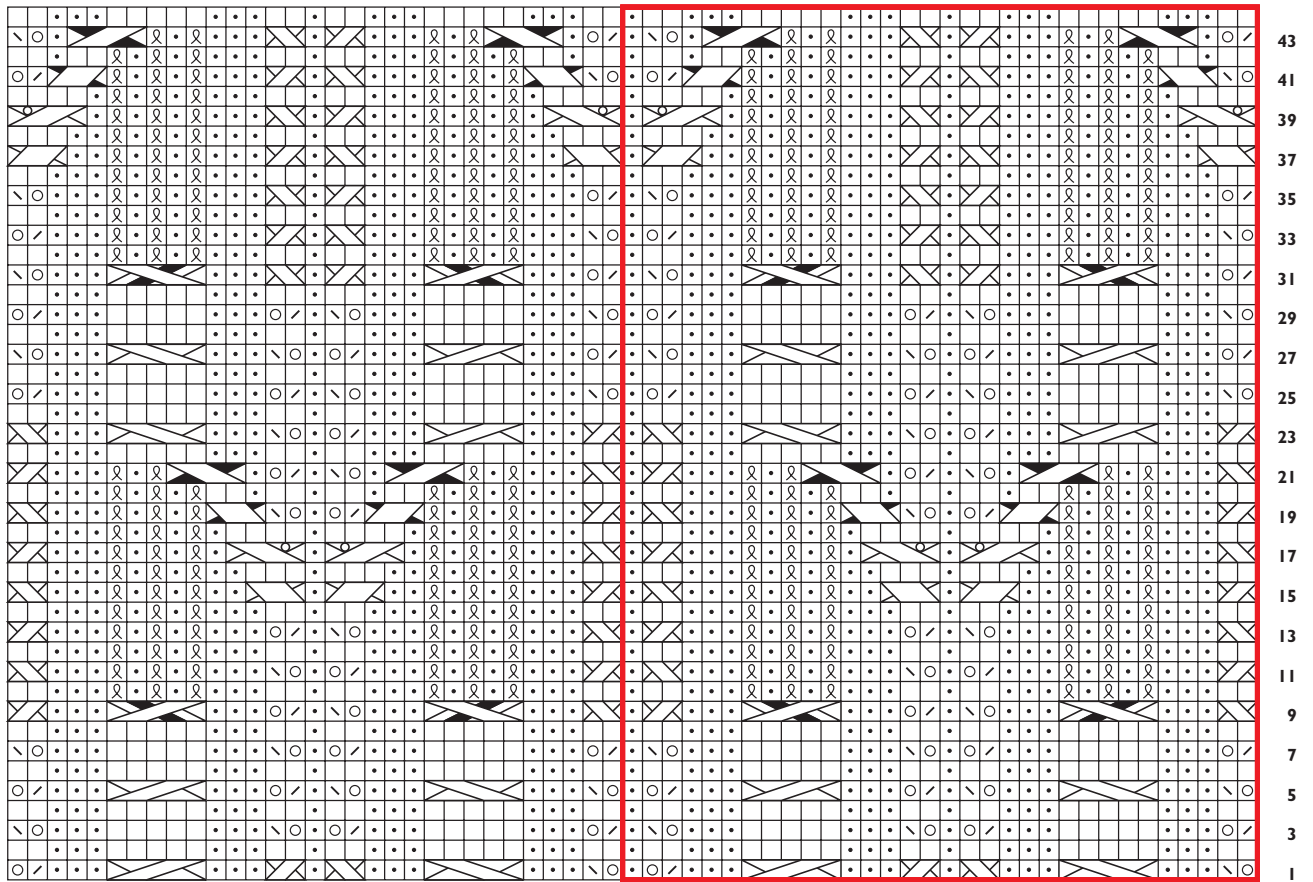


Crosses, Cables, and Twists



↑ end size 50" left front ↑ end size 50" sleeve ↑ beg size 50" sleeve ↑ beg size 50" right front

- | | | | | | |
|--|----------------------------|--|--|--|--|
| | k on RS; p on WS | | Cr2R (see Stitch Guide) | | sl 2 sts onto cn and hold in back, k2, p2 from cn |
| | p on RS; k on WS | | Cr2L (see Stitch Guide) | | sl 2 sts onto cn and hold in front, p2, k2 from cn |
| | k1 tbl on RS; p1 tbl on WS | | RC with Yo (see Stitch Guide) | | sl 3 sts onto cn and hold in back, k2, k3 from cn |
| | yo | | LC with Yo (see Stitch Guide) | | sl 2 sts onto cn and hold in front, k3, k2 from cn |
| | k2tog | | sl 1 st onto cn and hold in back, k2, k1 from cn | | sl 3 sts onto cn and hold in front, k2, [k1, p1, k1] from cn |
| | ssk | | sl 2 sts onto cn and hold in front, k1, k2 from cn | | sl 1 st onto cn and hold in back, k2, p1 from cn |
| | pattern repeat | | sl 2 sts onto cn and hold in front, p1, k2 from cn | | sl 2 sts onto cn and hold in front, k1, p1, k1, k2 from cn |